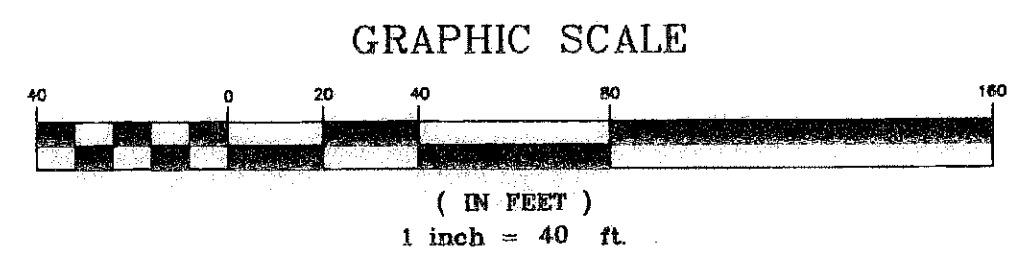
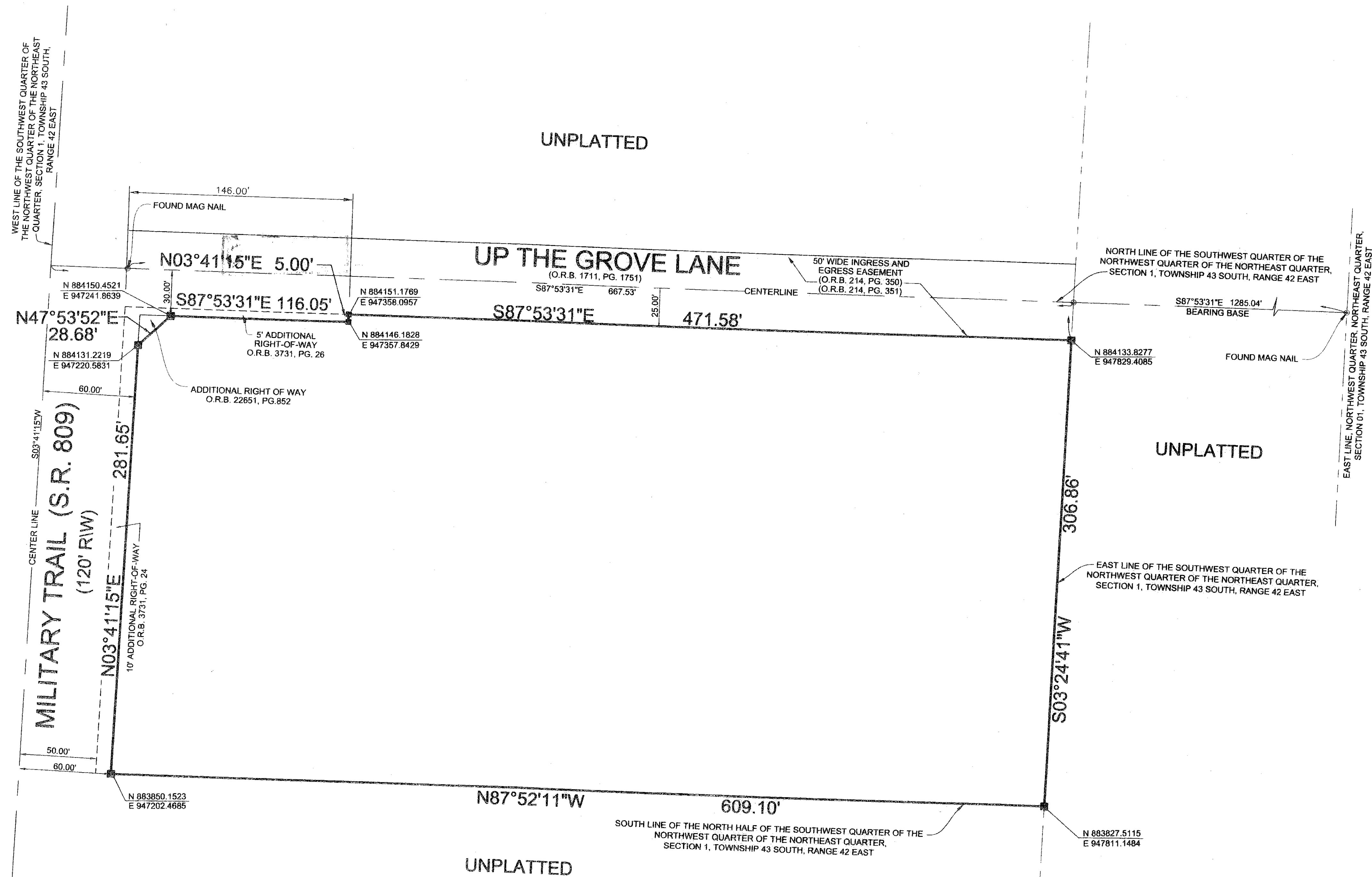


5840 NORTH MILITARY TRAIL

A PARCEL OF LAND BEING A PORTION OF THE NORTH HALF OF THE SOUTHWEST QUARTER
OF THE NORTHWEST QUARTER OF THE NORTHEAST QUARTER LYING IN
SECTION 1, TOWNSHIP 43 SOUTH, RANGE 42 EAST,
PALM BEACH COUNTY, FLORIDA
JULY, 2008 SHEET 2 OF 2

155

STATE OF FLORIDA
COUNTY OF PALM BEACH
This plat was filed for
record at _____ M. this day
of _____, 2008 and duly
recorded in Plat Book No. _____
on Pages _____ thru _____
Sharon R. Beck
Clerk and Comptroller
By _____ D.C.



LIDBERG LAND SURVEYING, INC.
LB 4431
675 West Indian Town Road, Suite 200,
Jupiter, Florida 33458 TEL. 561-746-8454

CAD	K:\AUTOCAD2000\014342\06-163\DWG\06-163-306.DWG		
REF			
FLD		FB. FC.	JOB 06-163 (306)
OFF	J.K.O.		DATE 10/17/2007
CKD	D.C.L.	SHEET 2 OF 2	DWG D06-163P